

# GALLERY NEWS WINTER 2022

cowra  
regional  
art  
gALLERY



# WOMEN ARTISTS

THE COLLECTION IN FOCUS

15 MAY TO 19 JUNE 2022

# GALLERY NEWS

## FROM THE GALLERY DIRECTOR

Welcome to our Winter Newsletter

After successfully hosting the Archibald Prize 2021 Australia's foremost portraiture exhibition during March and April the Gallery will continue to present exciting must-see exhibitions during the Winter months commencing with a stimulating showcase of works by Australian women artists from the Gallery collection. Alongside the collection exhibition is a unique exhibition of traditional and innovative textile miniatures featuring artists from around the globe. The 20 x 20 cm works in the exhibition have been created using tapestry-making techniques, embroidery, jacquard and applique.

These two exciting exhibitions will be followed by the *Dobell Drawing Prize #22* a touring exhibition from the National Art School, established as an annual drawing award in 1993 by the Art Gallery of NSW, initiated by the Sir William Dobell Art Foundation. The prize celebrates technical skill, innovation and expanded definitions of drawing. There are 44 artists in the exhibition.

Since the last Newsletter most COVID-19 mandatory restrictions have now come to an end and the Gallery can once again present a broad program of public activities including public events such as openings with guest speakers, artist talks and workshops as well as hosting school groups back to the Gallery. We also aim to continue with the highly successful AT HOME media program of recorded public events downloaded to the Gallery website.

Myself and the Gallery team look forward to seeing you at the Gallery.

Until next time.

Brian Langer  
Gallery Director



The Gallery Director in conversation with artist Kathrin Longhurst winner of the 2021 Archibald Packing Room Prize during the Archibald Prize 2021 exhibition at the Gallery.

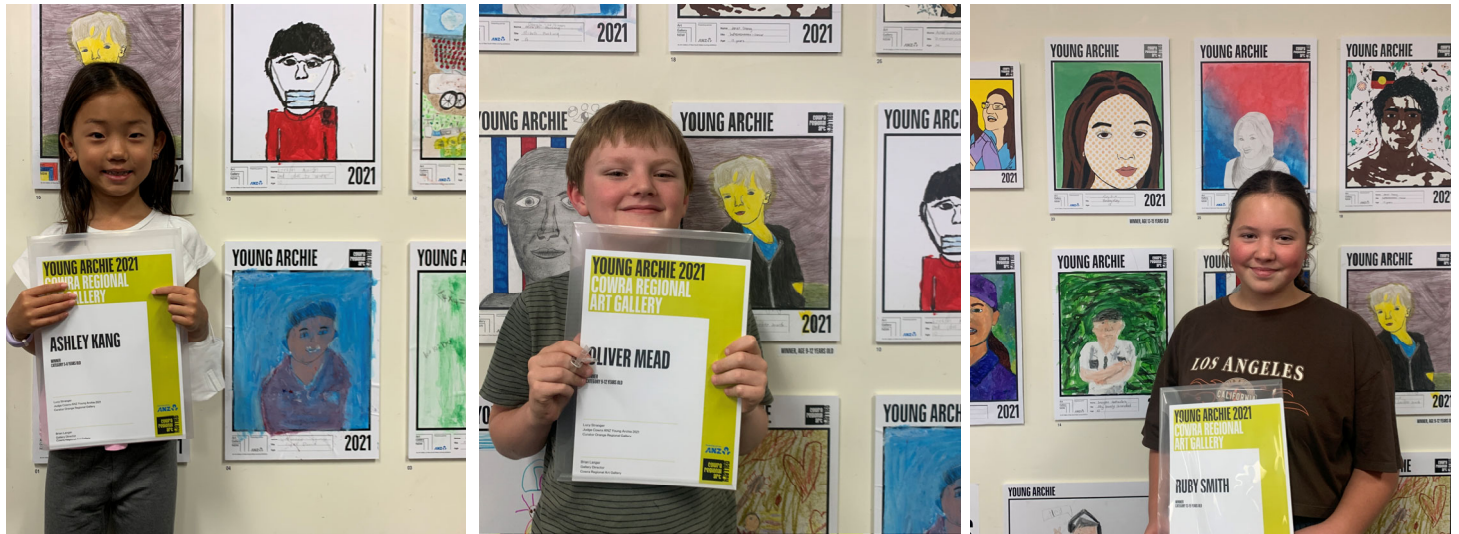
## AUTUMN HIGHLIGHTS



**Top to bottom: 1:** Evening drinks outside the Gallery during the Archibald Prize 2021 opening celebration. **2:** Brian Langer, Gallery Director, Miranda Carroll, Director of Public Engagement, AGNSW, Damian Lance, Relationship Banker, ANZ and Cr Bill West, Mayor Cowra Shire Council at the Archibald Prize 2021 opening. **3:** Crowds enjoying the Archibald Prize 2021 opening celebration. **4:** Gallery Director Brian Langer opens the Cowra ANZ Young Archie competition and announces the winners of each age category.

# GALLERY NEWS

## CELEBRATING LOCAL CREATIVITY WITH THE ANZ YOUNG ARCHIE



The Archibald Prize is Australia's pre-eminent portraiture event and an icon of Australian artistic endeavour. Its junior extension, the Young Archie competition, provides an excellent platform for young people to create thought-provoking art about people who are special to them.

The Cowra ANZ Young Archie Competition received 63 entries from 14 towns and villages in the Cowra region and 11 local schools.

The finalists were selected by local artists Tony Dagg and Inel Date, and the winners were selected by Lucy Stranger, Curator Orange Regional Gallery.

The Finalists Exhibition, held in the Cowra Library from 22 April to 21 May, was opened on Friday 22 April and

winners were announced by Gallery Director, Brian Langer. Congratulations to all the entrants, finalists and winners.

All entries are now available to view in a digital exhibition on the Gallery website.

[www.cowraartgallery.com.au/youngarchie](http://www.cowraartgallery.com.au/youngarchie)

### Winners:

5-8 Years Old: Ashley Kang

9-12 Years Old: Oliver Mead

13-15 Years Old: Ruby Smith

16-18 Years Old: Lucy Gregg

Images left to right: **1.** Ashley Kang with her artwork *Super David*. **2.** Oliver Mead with his artwork *My little brother James*. **3.** Ruby Smith with her artwork *Benday Ruby*.

## GALLERY ONLINE

Continue your Gallery experience online with exhibition commentary, films and interviews. Discover works from the *Calleen Collection* alongside historical research and engaging essays. The Cowra Regional Art Gallery website contains up to date information on our exhibition program, public events and workshops, Gallery collection and more.

Like us and follow us for exhibition insights, extra resources and important updates to the Gallery program.



## SUPER VOLUNTEERS



Over the Archibald Prize 2021 exhibition the Gallery welcomed over 3000 visitors through our doors. Thank you to the volunteers who assisted us in this huge endeavor. We greatly appreciate your support and have received many positive comments from our visitors on their time at the Gallery. Image: Gallery Volunteer, Beverley Cartwright

# EXHIBITION PROGRAM

15 MAY TO 19 JUNE 2022

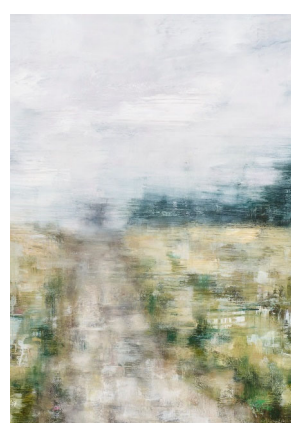


## Baltic Mini Textiles

Launched in 1993 in Gdynia, Poland, the Baltic Mini Textile Gdynia exhibition is one of Europe's leading reviews of textile miniatures. Toured by Warwick Art Gallery.

Image: Henryka AREMBA (Poland/Denmark) Resistance 2016, own technique, linen, wood

15 MAY TO 19 JUNE 2022



## The Collection in Focus - Women Artists

This showcase exhibition is a unique opportunity to celebrate the breadth and diversity of artwork produced by women in the Gallery Collection.

Image: Joanna Logue, *Taralga Track* (detail) 2008, oil on canvas, 240 x 160cm. Donated through the cultural Gift Program 2011. 2011.1

26 JUNE TO 14 AUGUST 2022

## Dobell Drawing Prize #22

The exhibition showcases the finalists' artworks across a broad range of media that acknowledges the foundational principals of drawing, while also encouraging challenging and expansive approaches to drawing. Toured by the National Art School, Sydney

Image: Craig Waddell, *35 Days with You* (detail), 2020, ink, watercolour, pastel and gouache on paper, 220 x 220cm, image courtesy and © the artist.



21 AUGUST TO 2 OCTOBER 2022

## Prue Venables (Living Treasures: Masters of Australian Craft)

Numerous national and international exhibitions, awards and publications celebrate the fine porcelain work of Prue Venables. Included in many public and private collections worldwide, these pots explore complex and unusual approaches to working with porcelain, challenge the significance of daily objects and highlight the richness that they bring to our lives. Forms are deceptively simple, stand quietly, with light dancing on the sprung tension of their rims, their softly melting forms inviting touch. A Touring exhibition by the Australian Design Centre.

Image: Esme's dressing table (group of multiple pieces). 2017 (detail)



cowra  
regional  
art  
GALLERY

77 Darling Street, Cowra NSW 2794 **ADMISSION FREE**

**Hours:** Tuesday to Saturday 10am - 4pm. Sunday 10am - 2pm

**Tel:** (02) 6340 2190

[www.cowraartgallery.com.au](http://www.cowraartgallery.com.au)

Please check the Gallery website before visiting.



The Cowra Regional Art Gallery is a cultural facility of the Cowra Shire Council