



Image: Jimmy Pike *Kurriny Piyirnkujarra* 1991. Screenprint. Courtesy artisan.

COMING UP 15 Dec 2012 to 3 February 2013

DESERT PSYCHEDELIC: Jimmy Pike

Jimmy Pike (1940-2002) is considered as one of Australia's great indigenous artists and one of Australia's greatest textile designers. His traditional land is the Walmajarri Great Sandy Desert in the Kimberley, Western Australia.

Produced at the height of the Indigenous cultural renaissance, Jimmy Pike's designs are vivid, dynamic and groundbreaking in their use of non-traditional colours. Due to his collaboration with the company Desert Designs, his designs exploded onto the international stage via high-fashion garments, textiles and furnishings and represent one of the most successful forays into the intersecting territories of indigenous art, craft and commercial design to date. The exhibition features a selection of Pike's original prints, textiles and garments produced from his fabric designs. The exhibition is curated by artisan, in partnership with Desert Designs and toured by Museum and Gallery Services Queensland with the assistance of Visions Australia.



WELCOME TO COWRA REGIONAL ART GALLERY

Since opening in October 2000, the Cowra Regional Art Gallery has made a significant contribution to the cultural life of the region, attracting visitors from around Australia and overseas.

The Gallery offers a diverse and changing exhibition program including significant state and national touring exhibitions, and projects featuring contemporary art and craft practices from the region. The Gallery also presents artists' talks in association with exhibition openings, educational activities for schools and workshops with guest artists for children and adults (see the Gallery website for more information).

The Gallery shop offers visitors a unique range of greeting cards from major Australian art institutions, art and local history publications, and selected works by artists from the region.

If you are interested in becoming a valued volunteer or wish to join the Friends of the Gallery please telephone the gallery on 6340 2190 or come in and see us.

Location

77 Darling St
opposite the Cowra
Civic Centre and
the Australian
World Peace Bell.

Cowra Regional Art Gallery

77 Darling St
Cowra NSW 2794
T: (02) 6340 2190
F: (02) 6340 2191
E: cowraartgallery@cowra.nsw.gov.au
www.cowraartgallery.com.au

Hours: Tues to Sat 10am-4pm,
Sun 2pm-4pm. (Mondays closed)

GENERAL ADMISSION: FREE

Cowra Regional Art Gallery is a cultural facility of Cowra Shire Council



COWRA REGIONAL ART GALLERY

AUG 2012
FEB 2013



Cover image: Martin Sharp *The thousand dollar bill*. Image courtesy of Art Gallery of NSW.



EXHIBITIONS



Image: Anne Starling *Child's Play 2011*. Linocut, carborundum collograph (detail). Courtesy the artist.

COMING UP 4–26 August 2012

NEW DIRECTIONS: Sydney Printmakers

The medium of fine art printmaking is often misunderstood, particularly since new technologies such as digital printmaking have emerged and become integrated within many art practices. It is timely to observe traditional printmaking techniques such as etching, lino, woodblock and lithograph displayed alongside computer-generated images or 'hybrid prints', in which several techniques are combined. *New Directions* showcases over 50 works, all high quality forms of fine art limited edition printmaking, and celebrates 50 years of the Sydney Printmakers group, which was established in 1961.



COMING UP 1 September to 14 October 2012

2012 ARCHIBALD PRIZE: NSW Regional Tour

The Archibald Prize is one of Australia's oldest, most prestigious art awards. JF Archibald aimed to foster portraiture, support artists and perpetuate the memory of great Australians. Among many controversies, these aims have certainly been fulfilled; many believe the Archibald Prize has done more than any other event to stimulate public interest in portrait painting in Australia. The prize was first awarded in 1921 and over the years some of Australia's most prominent artists have won, including William Dobell (1943,



Image: Tim Storrier *The histrionic wayfarer (after Bosch)*. Image courtesy of Art Gallery of NSW.

1948, 1959) Brett Whiteley (1976, 1978) and William Robinson (1987, 1995). The subjects of Archibald winners have been equally celebrated in their fields and include 'Banjo' Patterson, Margaret Olley, Patrick White, Paul Keating, John Bell and David Wenham. The 2012 winner is Tim Storrier for his self portrait *The histrionic wayfarer (after Bosch)*. The Archibald Prize is an Art Gallery of NSW exhibition toured by Museums and Galleries NSW.



COMING UP 20 October to 18 November 2012

FORM FIRE AND FRUITION: Geoff Crispin – a regional practice in clay

Geoff Crispin has a national reputation for his wood-fired stoneware and porcelain works, and is considered one of Australia's outstanding ceramic artists. His work reflects his preoccupation with exploring and developing local raw materials wherever possible, trying to bring out and enhance their inherent qualities. He is an exhibiting member of the Australian Ceramics Association, and his current work is a synthesis of technology, raw materials and various production methods (throwing, slip casting and slab building). He has worked extensively with remote indigenous communities, in particular, in the Tiwi Islands and Ernabella. This is a Grafton Regional Gallery touring exhibition curated by Angela de Martino Rosaroll.

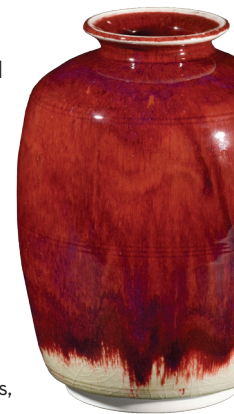
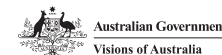


Image: Geoff Crispin *Copper Red Pot 2010*. Porcelain wood-fired, copper and red glaze. Image courtesy Grafton Regional Gallery



COMING UP 24 November to 9 December 2012

Regional Student Youth Art Exhibition and Awards

This is the ninth annual youth art exhibition and awards presented by the Cowra Regional Art Gallery focusing on the work by young artists from Central West high schools in years 10, 11 and 12. Award categories include painting, drawing, mixed media, photography and 3D art.

Image: Scott Leary *Turkish Landscape 2011* acrylic paint (detail). 2011 Merit Award Year 10.

