

19 October to 17 November 2019



Helen Geier. Through Two Decades

Helen Geier. Through Two Decades examines paintings and works on paper by Braidwood-based artist Helen Geier, produced between 2000 and 2019. Geier has been exhibiting nationally and internationally for more than four decades. Her exhibition history is substantial, beginning in 1972 and continuing into 2019. Her art explores the activity of painting and is characterised by an incisive intellectual approach. That approach is expressed through examination of the Australian landscape.

Her examinations, however, extend the notion of the landscape to include multiple ways of looking and seeing the landscape. A peripatetic traveller, her work includes interpolations of ways of looking from various cultures, including Indian and Chinese, as well as various expressions of Western cultures – in this exhibition 18th-century England, and 1920s and 1930s New York architecture. Geier's visual language is highly developed and sophisticated. *Helen Geier. Through Two Decades* provides a unique opportunity to view the work of one of Australia's most significant artists. The exhibition is curated by Peter Haynes, author of *Helen Geier*, a monograph on the artist's work published in 2016.

Image: Helen Geier, *Strange light* (detail), 2014, w/c, gouache, ink on paper, 56 x 76cm. Collection of the artist.

24 November to 8 December 2019



upstART 2019

UpstART showcases the work of regional students in Years 10, 11 and 12, encompassing a broad range of styles and subjects. The exhibition includes experimental and creative approaches to painting, ceramics, mixed media, photography and sculpture. This is a "must-see" exhibition presented by the Cowra Regional Art Gallery, in association with high schools in the Central West.

Image: Georgia Lewis, *The water alters me and I alter the water* (detail), 2018, acrylic on board. Winner Painting Award, Year 12 Cowra High School.



77 Darling Street, Cowra NSW 2794

ADMISSION FREE

Hours: Tuesday–Saturday 10am–4pm,
Sunday 2pm–4pm (Mondays closed)

T: (02) 6340 2190

E: cowraartgallery@cowra.nsw.gov.au

GET CONNECTED: www.cowraartgallery.com.au

Stay up-to-date with the Cowra Regional Art Gallery events, workshops and special activities by visiting Facebook or Twitter.



The above dates and exhibition information were correct at the time of publication. Please check the Gallery website for unforeseen changes.



Cowra
Council



Museums
& Galleries
of NSW



The Cowra Regional Art Gallery is a cultural facility of the Cowra Shire Council and supported by the NSW Government through Create NSW.

COWRA REGIONAL ART GALLERY

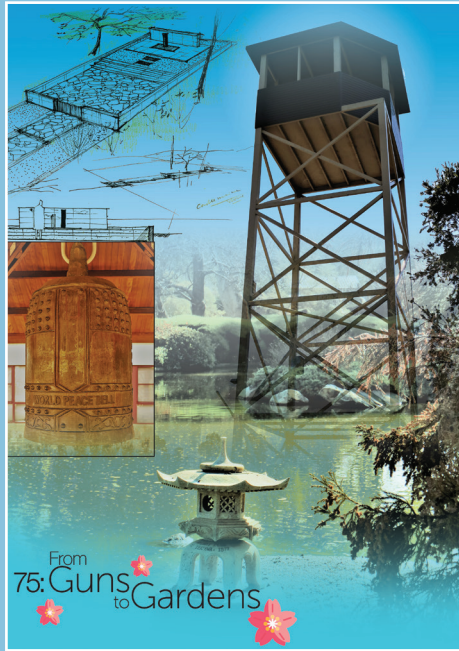
AUGUST to DECEMBER 2019



Front cover image: Catherine Truman, *Sensafat/love#2*, 2014, Ciclee print on German etching paper, 420 x 594 mm. *The Microscope Project* exhibition.

EXHIBITIONS

3 August to 18 August 2019



75: From Guns to Gardens

75 years ago, on 5 August 1944, a mass breakout of Japanese prisoners-of-war from the Cowra POW Camp resulted in the loss of 231 Japanese and four Australian lives (three more Japanese prisoners later died from their wounds). Cowra today is a place of reconciliation and peace between former enemies in World War II.

This exhibition bridges the gap between this tragic event and the reputation of Cowra today as a town dedicated to peace and friendship, and as a place that celebrates international co-operation and understanding across a range of venues and activities. The links between Cowra and Japan are particularly strong, and are a key part of Cowra's contemporary identity.

Curated by Dr Roslyn Russell PhD, Historian, Museum Curator and Writer, the exhibition includes historic objects and items of decorative art, photographs and other documents. Also on display is a showcase of paintings and crafted objects made from recycled materials by Italian prisoners at the Cowra POW camp. Presented in association with the 75th Anniversary of the Cowra Breakout.



Image: Photograph courtesy Roslyn Russell, composite design by Racheal Bruhn.

25 August to 22 September 2019



JamFactory Icon: Catherine Truman: no surface holds

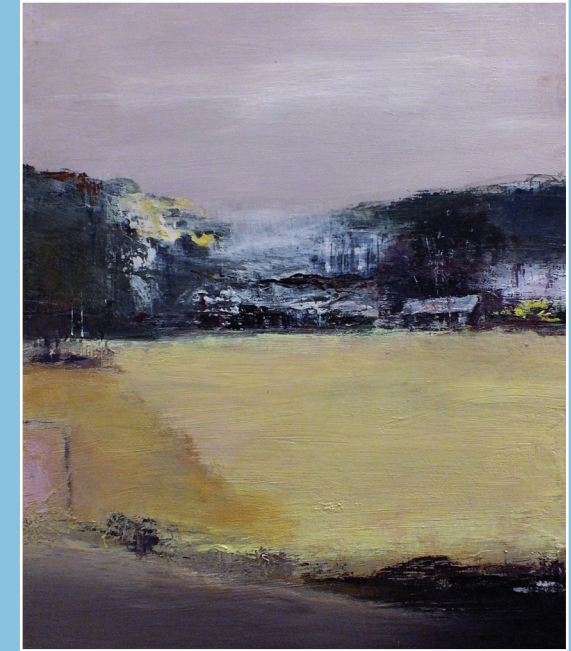
They say beauty is in the eye of the beholder. Perhaps it is in a vast landscape, or a personal experience. In Catherine Truman's case, it's often what she sees through the microscope. She is an accomplished artist, with a love of research flowing in the undercurrent to all of her practice. Truman's sculptural objects and jewellery, made primarily from carved English lime wood, are a reflection of her ongoing interest in the ways which knowledge of human anatomy has been acquired and translated through artistic process and scientific method.

JamFactory ICON: Catherine Truman: no surface holds is a JamFactory touring exhibition. *JamFactory ICON: Catherine Truman: no surface holds* has been assisted by the South Australian Government through Arts South Australia and the Australian Government through the Australia Council for the Arts, Contemporary Touring Initiative.



Image: Catherine Truman *Citizen Scopes-Plyscope*, 2014, object constructed from plywood, mirrors, iPhone, moving image, 480x440x340mm. Collaborative work with Deb Jones *The Microscope Project* exhibition, Flinders University City Gallery. Image: Grant Hancock.

28 September to 13 October 2019



Lachlan Valley Biennial Art Awards 2019

An exhibition not to be missed! Presented by the Cowra Art Group Inc and hosted by the Cowra Regional Art Gallery, the Lachlan Valley Biennial Art Awards are open to regional artists living within 100 kilometres from Cowra, including Young, Boorowa, Grenfell, Parkes, Forbes, Bathurst, Orange and Canowindra.

The LVBAA is non-acquisitive and open to entries that are two dimensional artworks in any style or subject. Award categories are painting, drawing, watercolour, printmaking, pastel, mixed media and miniatures. Participants have the opportunity to win several cash prizes, including a People's Choice Award and the major prize for the most outstanding work in the exhibition the Barbara Bennett Memorial Award.



Image: Sampa Bhakta, *Landscape inspired by the colour of the Canola Field*, acrylic on canvas. Winner of the Barbara Bennett Memorial Award 2017. Photograph: Gwen Clark.